

# 10 – 50 scfm

## E SERIES

# HeatSink™

## TRUE-CYCLING™ REFRIGERATED COMPRESSED AIR DRYERS

ZEKS True-Cycling™ refrigerated dryer operation allows these dryers to provide very high operating efficiency. They have been specially engineered to be used with 2.5HP – 10HP air compressors. They have enhanced heat exchangers for maximum efficiency and reliable refrigeration systems that include oversized condensers - designed specifically for these dryer models.

Moisture and contaminants are efficiently separated from the airstream through a centrifugal separator and are then removed with a reliable float-type drain or optional timed electric solenoid drain.

The optional Compustat™ microprocessor dryer control provides performance adjustment, and dryer and air system monitoring capability, and includes remote alarm relays.

These dryers are fully assembled and require only compressed air and utility hookup for installation.

HSE True-Cycling™ dryers provide:

- **Low pressure drop - 5 psi or lower**
- **Compact size**
- **Reliable True-Cycling™ operation**
- **Long service life**
- **Durable powder-coated finish**
- **ZEKS warranty coverage\***



24 HSE Model Shown

### STANDARD AND OPTIONAL FEATURES

MODEL	10HSE	18HSE	24HSE	35HSE	50HSE
Refrig Suction Pressure Gauge	S	S	S	S	S
Drain Trap	S	S	S	S	S
ON/OFF Switch	1	1	1	S	S
Refrigerant Compressor ON Light	1	1	1	S	S
Fahrenheit/Celsius Display	1	1	1	1	1
Dew Point Temp Display	1	1	1	1	1
Remote Alarm	1	1	1	1	1
Timed Solenoid Drain (Dial Control)	-	-	-	O	O
Cleanable Ambient Air Filter	O	O	O	O	O
NEMA 4 and 12 Electrics	-	-	-	O	O
Low Ambient Enclosure	-	-	-	O	O

**S** – Standard Feature  
**O** – Optional Feature  
**1** – With Compustat™ Controller  
 - - Not Available

\* See ZEKS' Warranty Policy for complete Warranty description

### Compustat™ Digital Controller



Microprocessor provides digital display of multiple dryer conditions including dew point temperature. Alarm conditions are adjustable and remote alarm relays are provided.

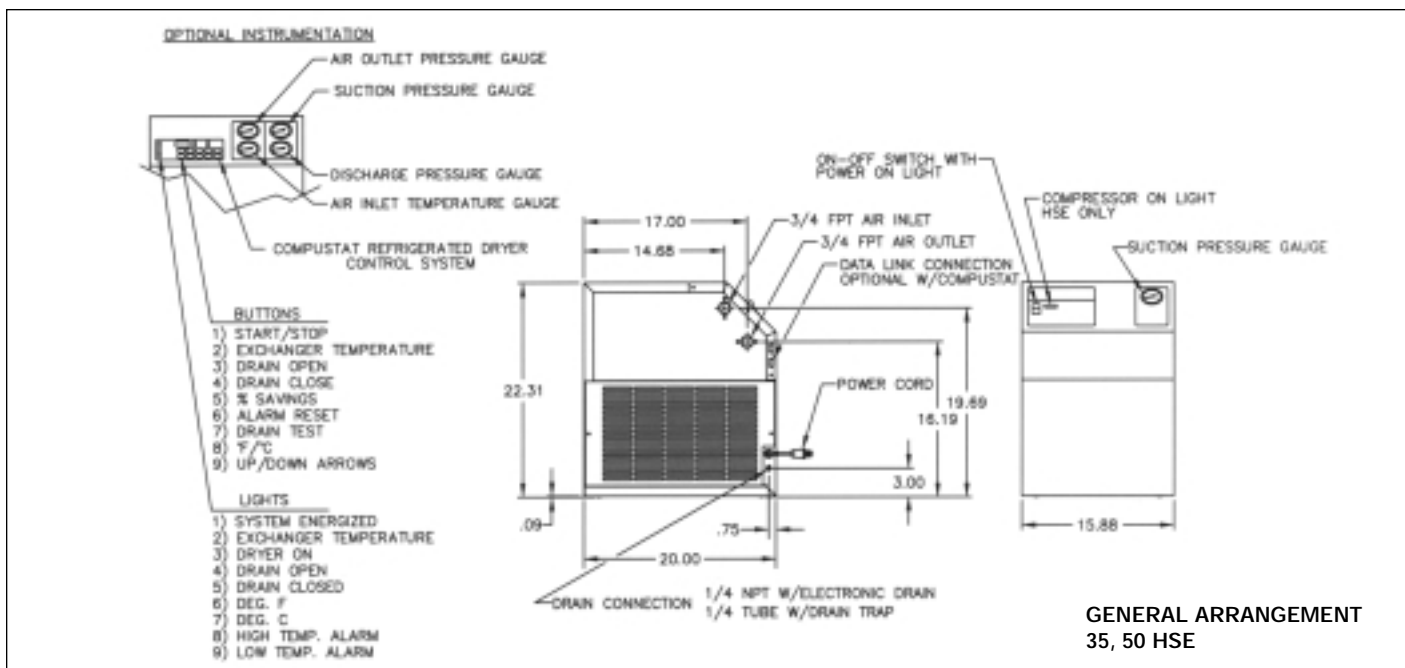
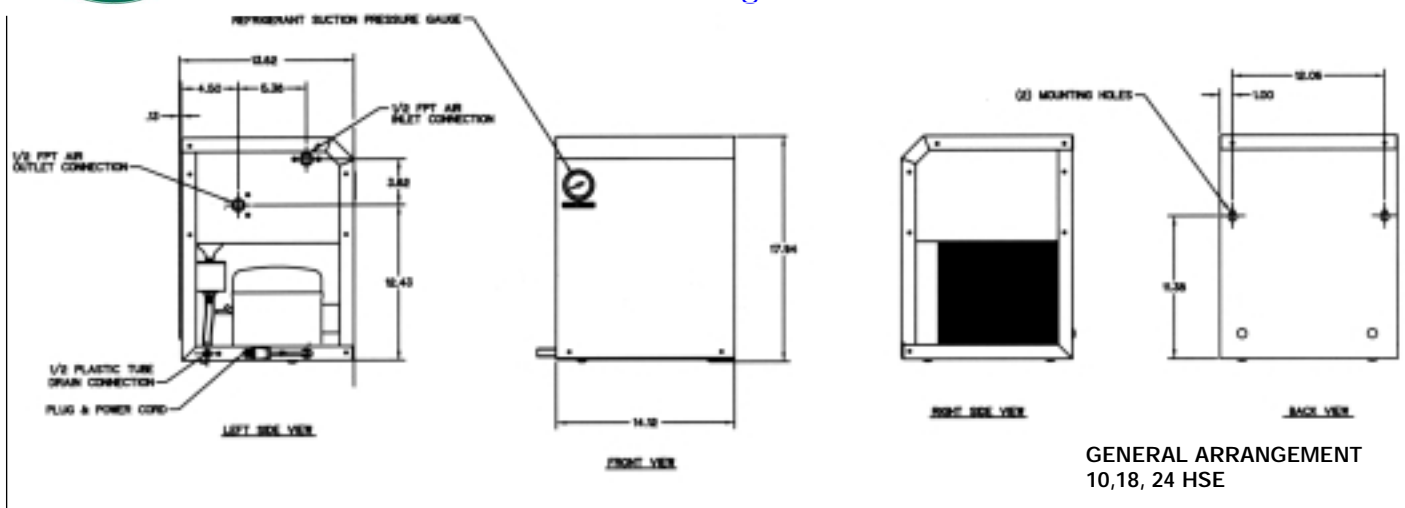
### Timed Solenoid Drain

This drain provides adjustable drain timing that can be set to accommodate ambient conditions. Dial control on sloped front panel or control through optional Compustat™ controller on 35 - 50 HSE models.

### Ambient Air Filter

Cleanable, reusable filter protects refrigeration system condenser from becoming fouled.

HEAT SINK™ TRUE - CYCLING REFRIGERATED COMPRESSED AIR DRYERS



**SPECIFICATION AND SELECTION CHART**

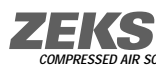
MODEL	10HSE	18HSE	24HSE	35HSE	50HSE
38°F/3.3°C PDP; scfm*	10	18	24	35	50
50°F/10°C PDP; scfm*	14	25	33	48	69
Width in.	14	14	14	20	20
Depth in.	14	14	14	16	16
Height in.	18	18	18	23	23
Shipping Weight lb.	101	101	110	170	172
Air Connection In/Out	1/2" FPT	1/2" FPT	1/2" FPT	3/4" FPT	3/4" FPT
Condensate Drain	1/8" FPT	1/8" FPT	1/8" FPT	1/8" FPT	1/8" FPT
Refrig. Comp. HP	1/5 (60Hz)	1/5 (60Hz)	1/3 (60Hz)	1/3 (60Hz)	1/2 (60Hz)
Max. Work. Press. psig	250***	250***	250***	250***	250***
Operating KW**	.31	.51	.66	.79	.94
Voltages	115-1-60 220-1-50	115-1-60 220-1-50	115-1-60 220-1-50	115-1-60 220-1-50	115-1-60 220-1-50

R22 refrigerant is used in all models.

\* Performance data obtained and presented in accordance with CAGI Standard No. ADF 100. Pressure dew point (PDP) at 100 psig, 100°F (37.8°C) inlet air, 100°F (37.8°C) ambient air (tested in actual conditions).

\*\* Average kilowatts per hour of dryer operation at full rated capacity. Operating kilowatt values reflect air-cooled models.

\*\*\* Maximum Working Pressure is limited to drain rating (250 psig).



COMPRESSED AIR SOLUTIONS™  
 1302 Goshen Parkway, West Chester, PA 19380  
 610-692-9100 800-888-2323 Fax 610-692-9192  
 www.zeks.com

HSE 10-50-1001-5M-DBO

Specifications, illustrative materials and descriptions contained herein were as accurate as known at the time this publication was approved for printing. The company reserves the right to change specifications, discontinue models, equipment or design without notice and without incurring obligation. The information set out in this brochure is for preliminary information only and is not intended to constitute any representation or warranty by ZEKs to potential customers or to form the basis of a contract with any customer.